

SPEC SHEET + MEASUREMENTS

PORT AUTHORITY.

Port Authority® Horizon Puffy Jacket. J364

Product photo



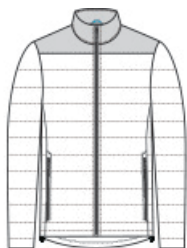
With horizontal baffles, a slight sheen and insulation that simulates down feathers, this is the newest puffy on the horizon. A water-resistant finish helps keep light rain out. •

- 100% polyester shell and lining
- 90/10 polyester/spandex woven overlay on shoulders
- Molded center front zipper
- Elastic cuffs
- Port Pocket™ for decoration access
- Molded zippered hand pockets
- Insulation method: 10.4-oz. polyfill
- Water protection method: water-resistant finish on shell, PU coating on lining

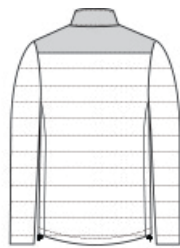
CARE INSTRUCTIONS

Machine Wash Cold With Like Colors Or Separate. Do Not Use Fabric Softener. Only Non-Chlorine Bleach When Needed. Tumble Dry Low. Cool Iron If Necessary.

Sketches



front



back

SPEC SHEET + MEASUREMENTS

PORT AUTHORITY

Port Authority® Horizon Puffy Jacket. J364

PRODUCT MEASUREMENTS

	XS	S	M	L	XL	2XL	3XL	4XL
Body Length at Back	27 1/2	28 1/2	29 1/2	30 1/2	31 1/2	32 1/2	33	33 1/2
Chest	20 1/2	22	23 1/2	25	26 1/2	28	30	32
Sleeve Length from Center Back	34 1/4	35	35 3/4	36 1/2	37 1/4	38	38 3/4	39 1/2

Body Length at Back: Measured from high point shoulder to finished hem at back.

Chest: Measured across the chest one inch below armhole when laid flat.

Sleeve Length from Center Back: Measure from Center Back neck to shoulder point to sleeve hem.

SIZE CHARTS

	XS	S	M	L	XL	2XL	3XL	4XL
Chest	32-34	35-37	38-40	41-43	44-46	47-49	50-53	54-57

SPEC SHEET + MEASUREMENTS

PORT AUTHORITY.

Port Authority® Horizon Puffy Jacket. J364

HOW TO MEASURE



CHEST

Measure under the arm and around the fullest part of the chest with arms down, keeping tape horizontal.

COLORS



Deep Black
PMS Black C



Deep Smoke/
Grey Smoke
PMS 425C



Dress Blue
Navy
PMS 533C



True Blue/
Deep Black
PMS 654C